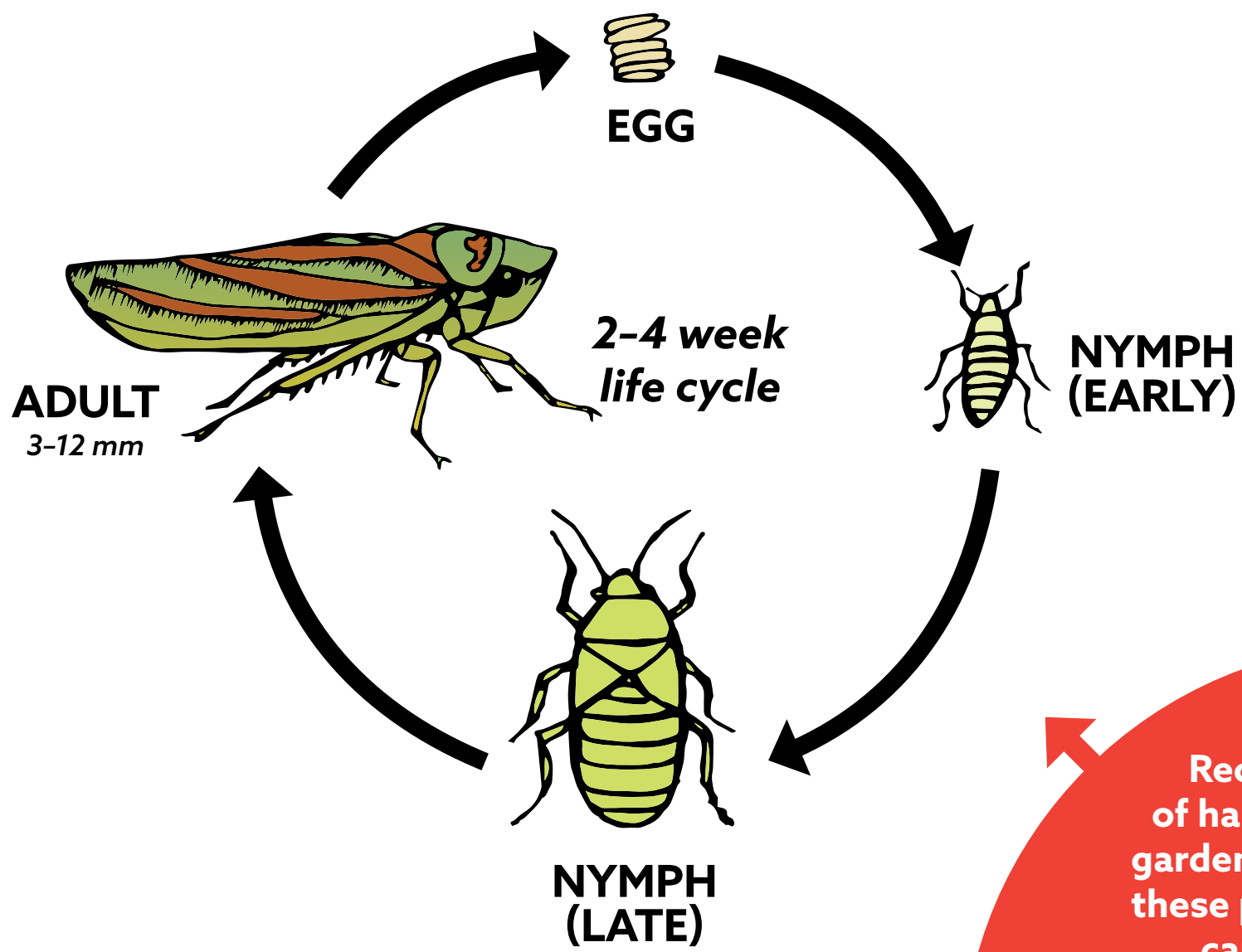
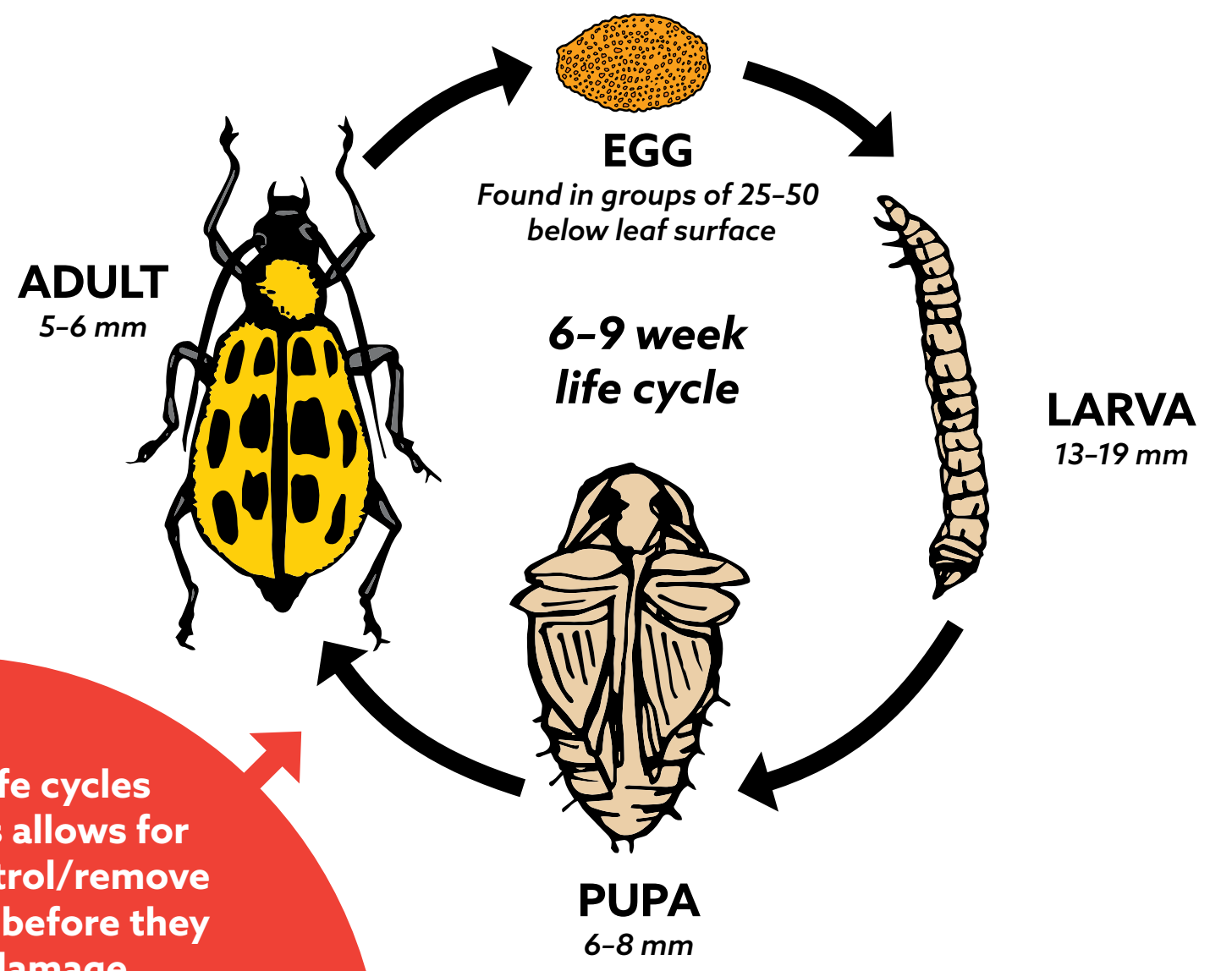


Insect Life Cycles

Sucker (Leafhopper)



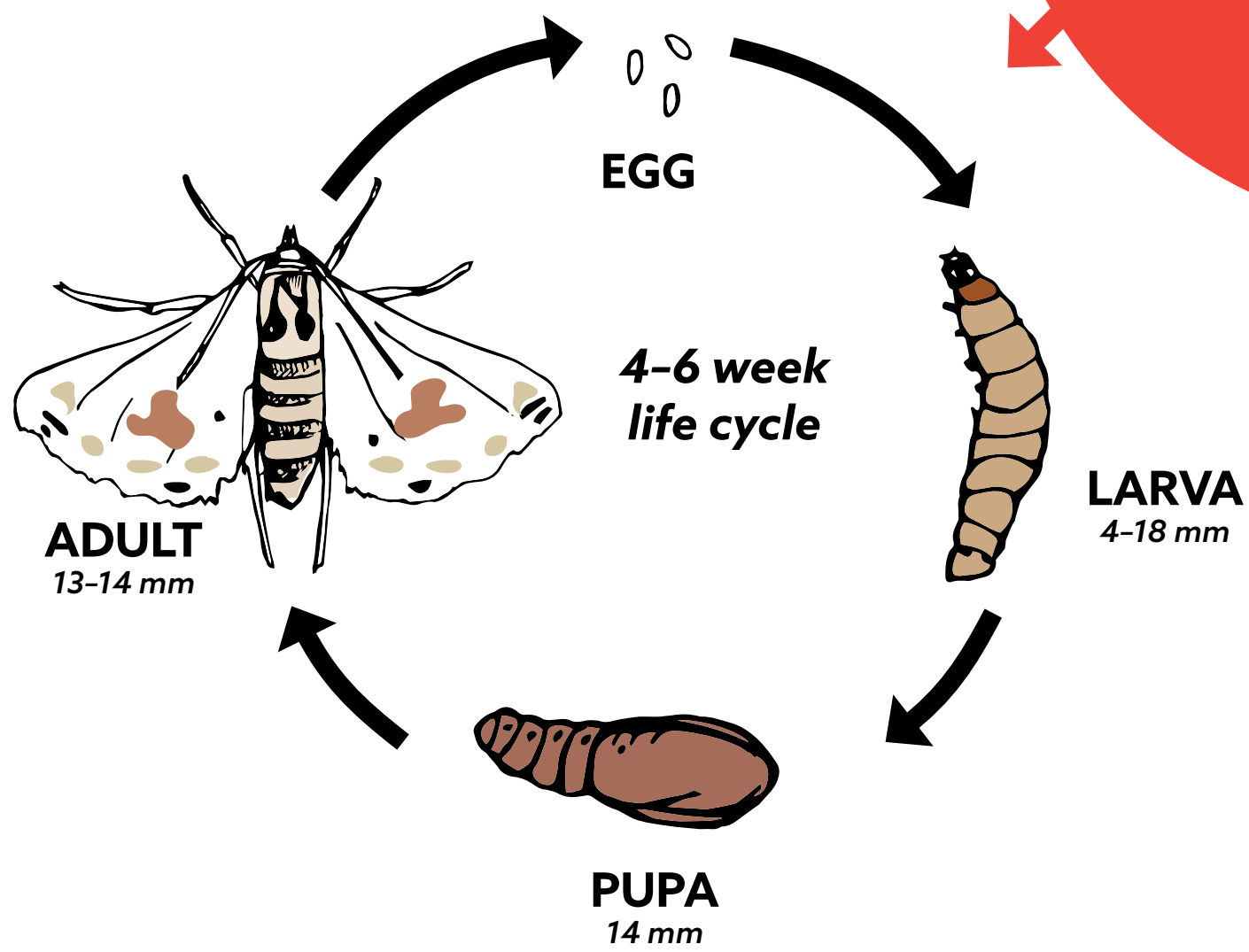
Defoliator (Cucumber beetle)



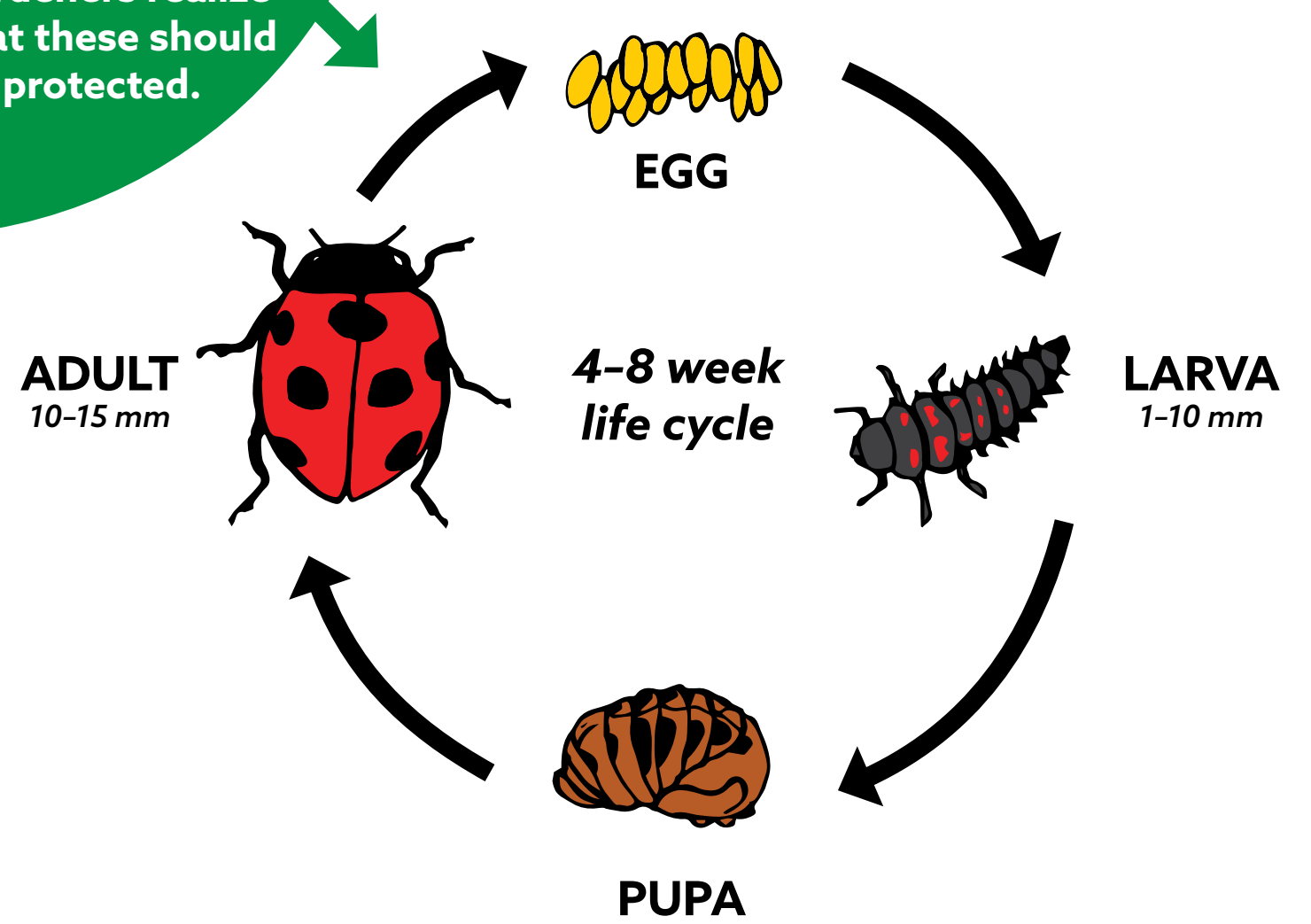
Recognizing life cycles of harmful pests allows for gardeners to control/remove these pests early before they cause major damage.

Recognizing beneficial insects at all stages of their life cycle helps gardeners realize that these should be protected.

Borer (Eggplant fruit and shoot borer)



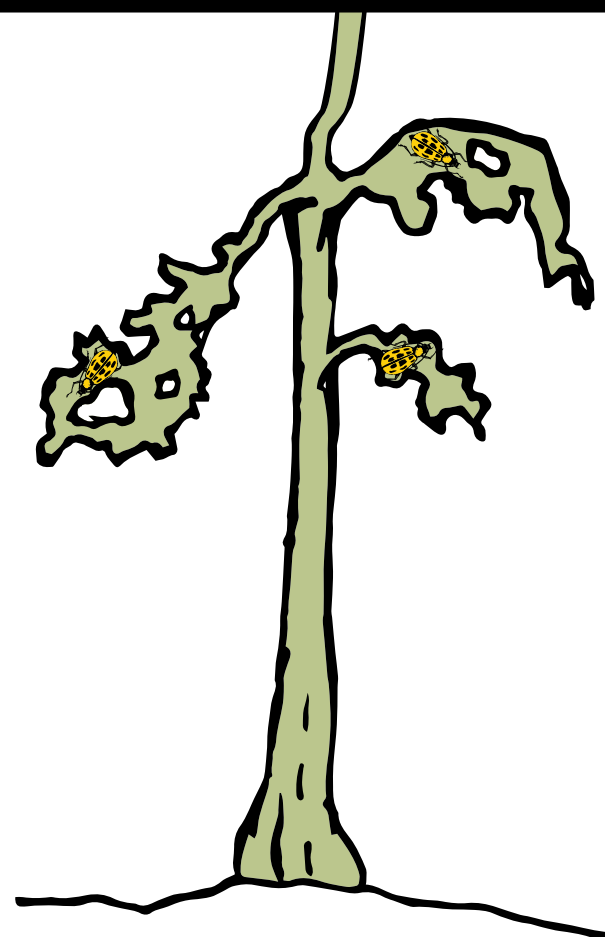
Beneficial (Ladybug)



Early recognition of pests in the beginning stages of their life cycle allows for easier removal.



Vs



Late recognition can allow pests to reach destructive stages in their life cycles which could result in loss of crops.